

# User manual

## Adaptive Writing Tool

### Description

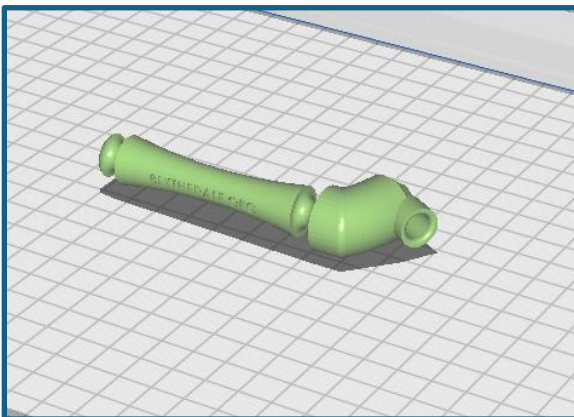
- Adjustable opening to receive a variety of tools, such as: crayons, markers, paint brush, and stylus.
- Dynamic joint allows for various degrees of adjustability of the tool angle to surface.
- Angle adjustability and flexibility to support various grasp patterns or for those individuals that cannot sustain grasp pattern on a writing tool.

### Materials and tools

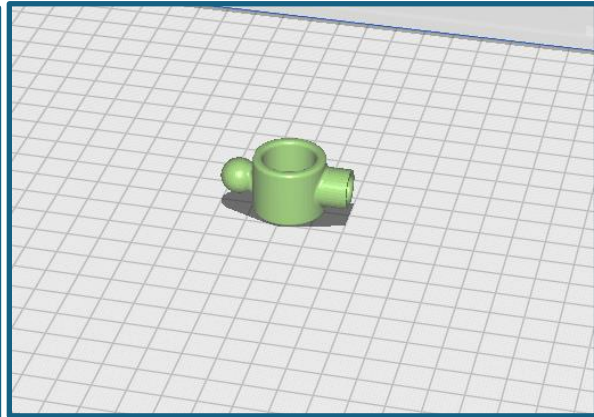
- 2 Flush-mount inserts 10-24 [Barbed Inserts for Softwood, Flush-Mount, 10-24 Thread Size, 0.394" Installed Length | McMaster-Carr](#)
- 2 Nylon hex head screw 10-24 ¾" long <https://www.mcmaster.com/94613A245/>
- Pliers.
- Heat gun.
- Superglue.

### Instructions

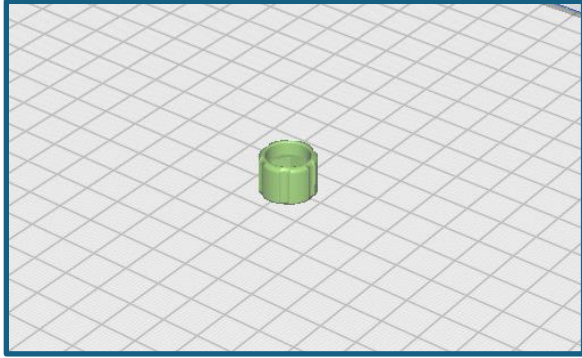
1. It is recommendable that the parts be printed in the following orientation.



Handle



Tool holder.



Head screw.

2. Heat one insert and using the pliers, push it into the hole at the top of the handle until is fully covered by plastic. Don't push it too hard or it will deform the shape.



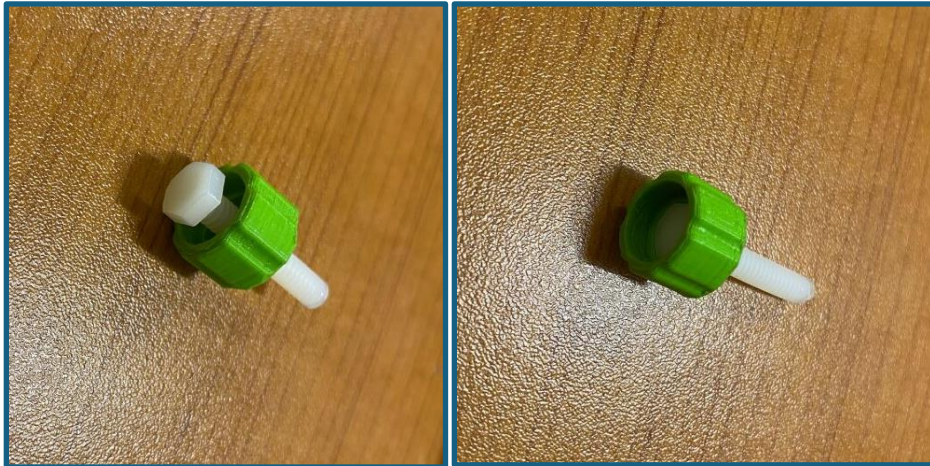
- Heat the other insert and set it into the hole of the tool holder.



- Gently push the round ball into the receiver of the handle. If it doesn't fit check that the insert is not on the way.



5. Insert the nylon screws through the head of the printed head screws, until fits inside the hexagonal part. If necessary, glue the two parts together using superglue.



6. Add both screws to the inserts.



7. Use one of the screws to hold the market, stylus, or any other tool you want to use. The other screw will keep the tool stable on the orientation desired. You can also use the grooves on the handle to add a cord or elastic to help the user to hold the tool.

